

# LÖLSBERG

## Operating and fitting instructions for **i.SpatulaShower** spray rinsing devices for ice-cream scoops and spatulas (Item Nos. 930001, 930002, 930003)

All **i.SpatulaShower** spray rinsing devices and components have to be exclusively applied for cleaning purposes for ice-cream scoops and spatulas. Any other application is not appropriate.

### Operating Instructions & Important Advices:

- The water valve is opened by pressing the ice-cream scoop/spatula onto the white activation disc. The ice-cream scoop/spatula is always rinsed with fresh water from the sides. Dirty washing water runs away immediately. On removing the ice-cream scoop/spatula from the activation disc the water valves are automatically closed again by the water pressure.
- **Let system run continuously for 1 minute at least once a day before starting operation and after finishing operation for the day!**
- **Rinse ice-cream scoop/spatula until only clean water runs down along the spray rinsing unit!**
- Do not use the overflow pipe during daily operation. Application of the overflow pipe only for cleaning purposes. **The water discharge holes are not allowed to stand in dirty water.**
- **Clean/sanitize complete spray rinsing device at least once every day and disassemble spray rinsing unit in sufficient time intervals to clean/sanitize/decalcify it from inside and outside (don't use "aggressive" detergents, cleansers, bleaches, decalcifiers, etc.)!**



### Fitting Instructions & Important Advices:

- The i.SpatulaShower spray rinsing devices 930001 - 930002 - 930003 are to be installed with adequate backflow protection to comply with applicable federal, state, and local codes!
- Check correct fitment of all threads and installation according to your local technical regulations and norms and make sure there are no leakages before using the system!
- Install a water pressure reducer (recommended water pressure +/- 2 bars resp. +/- 29 psi) and a ball tap!
- Ensure that all joints and seams in the splash zone are sealed and that brass parts are not exposed after installation!
- Close the water supply line during night and/or absence!
- Ensure at all times a free water drainage in order to avoid the water discharge nozzles (No. Y+Z) from being contaminated towards the inside!
- Clean/sanitize complete spray rinsing device at least once every day and disassemble spray rinsing unit (No. C) in sufficient time intervals to clean/sanitize/decalcify it from inside and outside (don't use "aggressive" detergents, cleansers, bleaches, decalcifiers, etc.)!
- Let system run continuously for at least 3 minutes before starting first operation in order to clean the system before using!
- Let system run continuously for 1 minute at least once a day before starting operation and after finishing operation for the day!



930001



930002



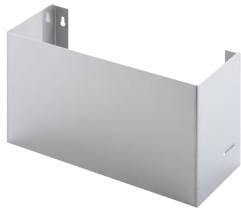
930003



## Scope Of Supplies:

1 x Fitting and Operating Instruction

1 x Wall Attachment Holder 930903 (No. A)  
(only for 930003)



1 x Rinsing Container/Pan 930908 (No. B1)



1x Drain connection 1" 930957 (No. B2)



1x Strain insert for drain connection  
1" 930958 (No.B2)



1 x Spray Rinsing Unit 930001 (No. C)  
(without activation disc)



## Scope Of Supplies:

1 x Activation Disc With Slider 930980PS (No. D)



1 x Mini-Spanner 930981

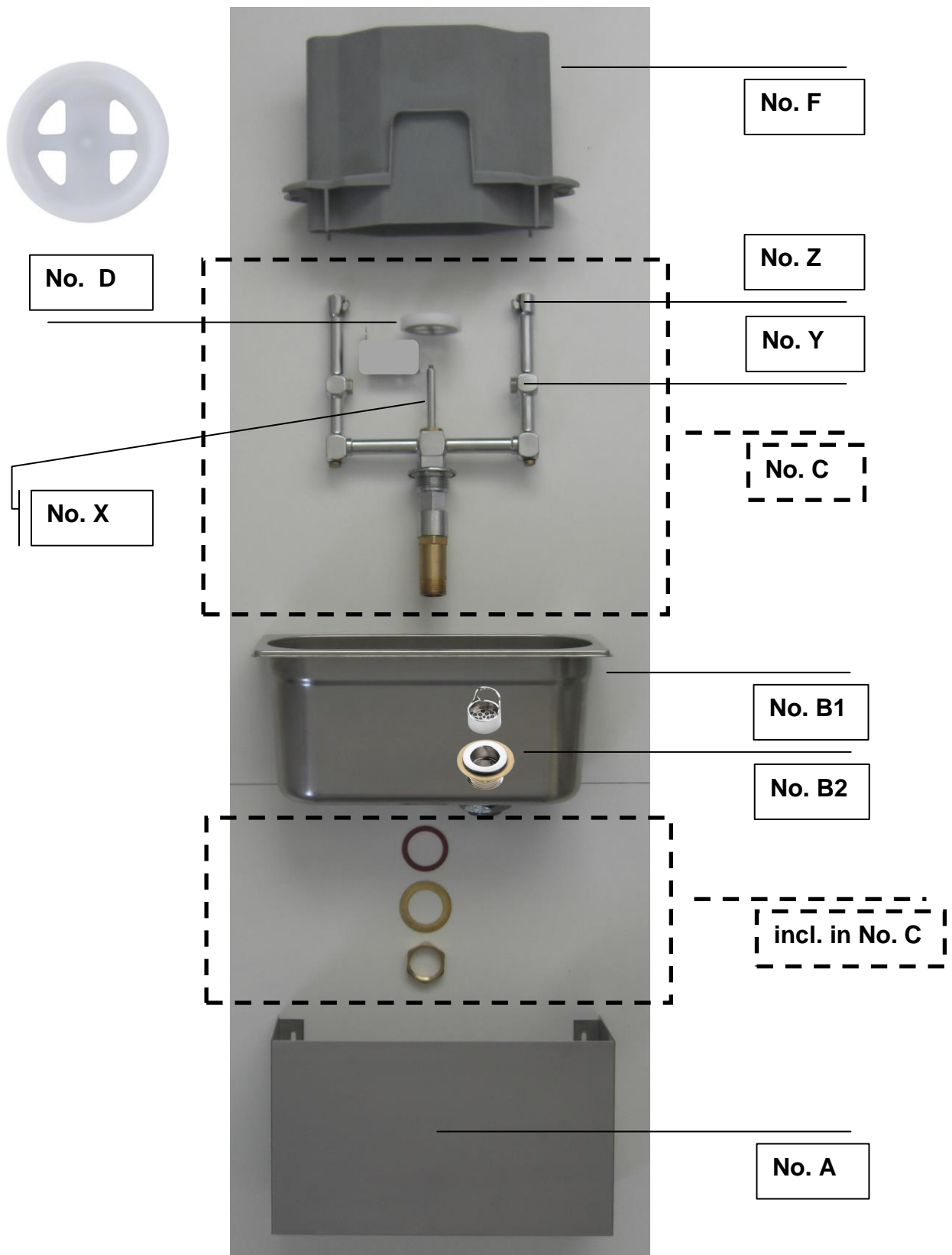


1 x Splash Cover 930909P (No. F) incl. deposits/holders for ice-cream scoops/spatulas (without scoop and spatula)



# LÖLSBERG

## Fitting Instructions – Parts List

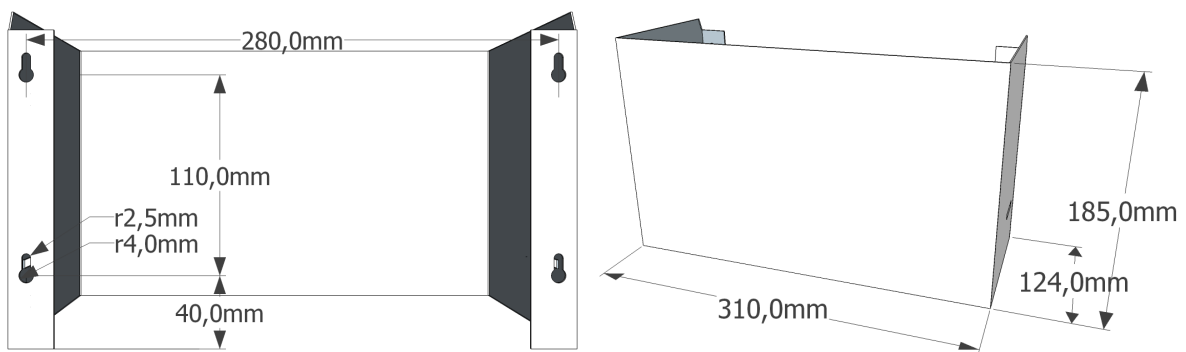
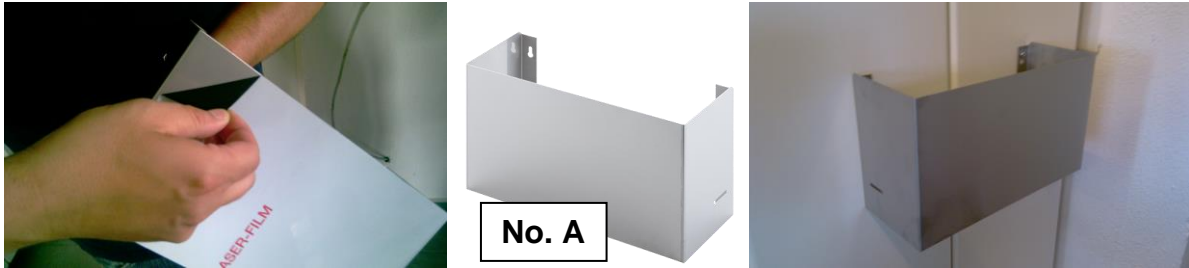


# LÖLSBERG

## Fitting Instructions – STEP 1 + 2

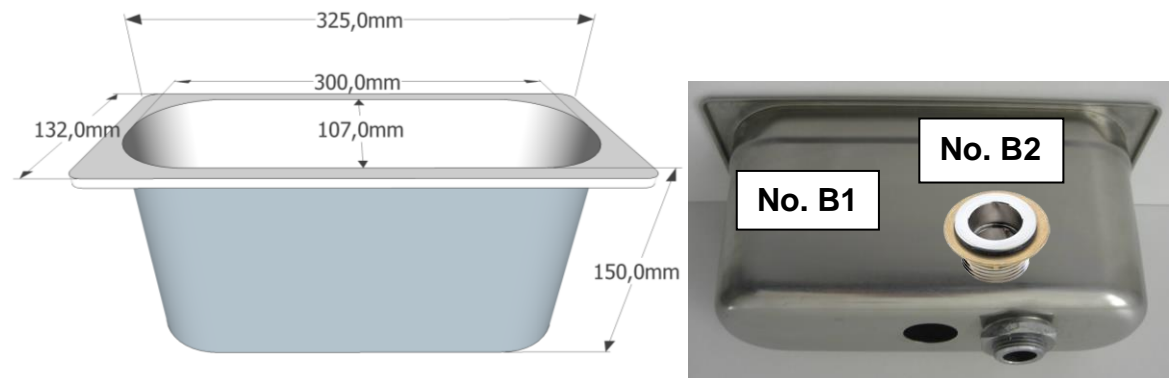
### STEP 1 – Mount Wall Attachment Holder (No. A)

Remove the protection foil from the wall attachment holder (No. A) and attach the holder to the work counter/ice cabinet/wall by using adequate screws.



### STEP 2 – Put Water Drain Connector into the Rinsing Container/Pan (No. B)

Install the 1" water drain connector (No. B2) into the deep draw hole of the rinsing container/pan (No. B1) by using the gasket, metal washer and the screw nut (included in No. B2).



**Container  
bottom**



# LÖLSBERG

## Fitting Instructions – STEP 3 + 4

### STEP 3 – Put Spray Rinsing Unit (No. C) into the Rinsing Container/Pan (No. B)

Fit the spray rinsing unit (No. C) through the flat center hole (approx. 21,5mm) inside the rinsing container/pan (No. B1+B2) by using the red paper gasket, metal washer and the screw nut (included in No. C).



### STEP 4 – Put Assembled Device into the mounted Wall Attachment Holder

Put the assembled device into the wall attachment holder (No. A) mounted in STEP 1.



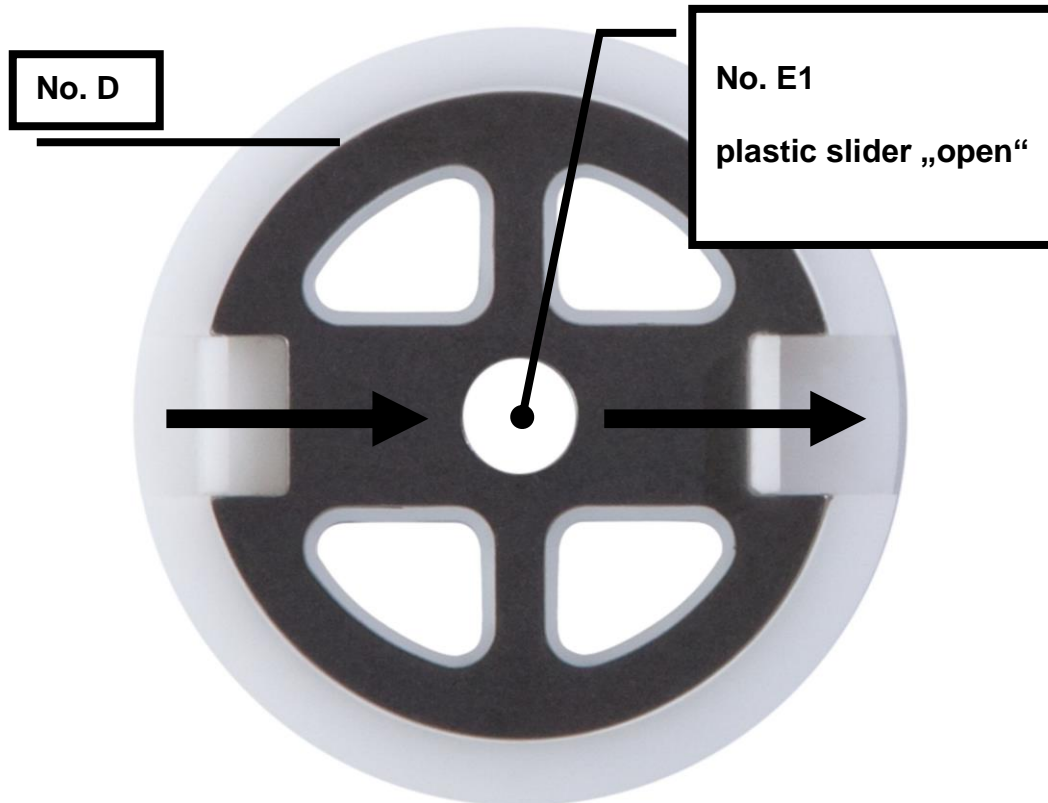


# LÖLSBERG

## Fitting Instructions – STEP 5

**STEP 5.1 – Put Activation Disc With Slider (No. D) onto the Valve Rod With Groove (No. X)...**

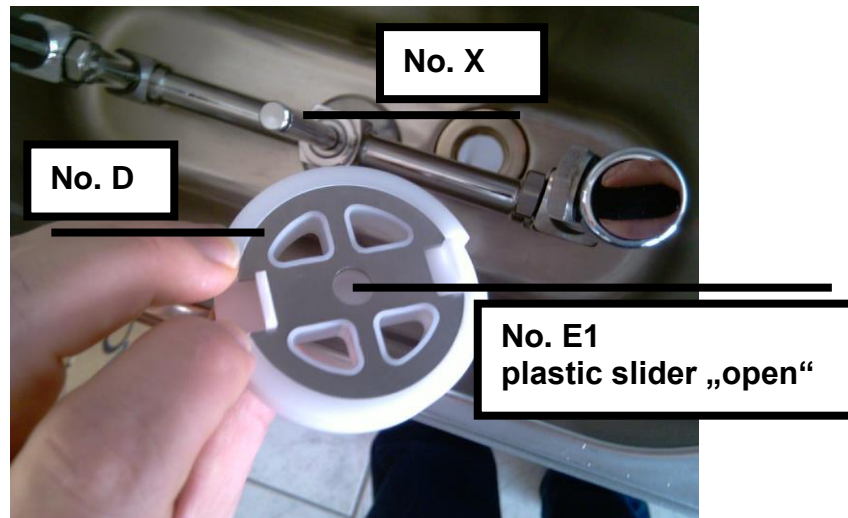
**Make sure that the plastic slider inside the activation disc (No. D) is in the “open” position (No. E1).**



# LÖLSBERG

## Fitting Instructions – STEP 5

...STEP 5.1 – Put Activation Disc With Slider (No. D) onto the Valve Rod With Groove (No. X).



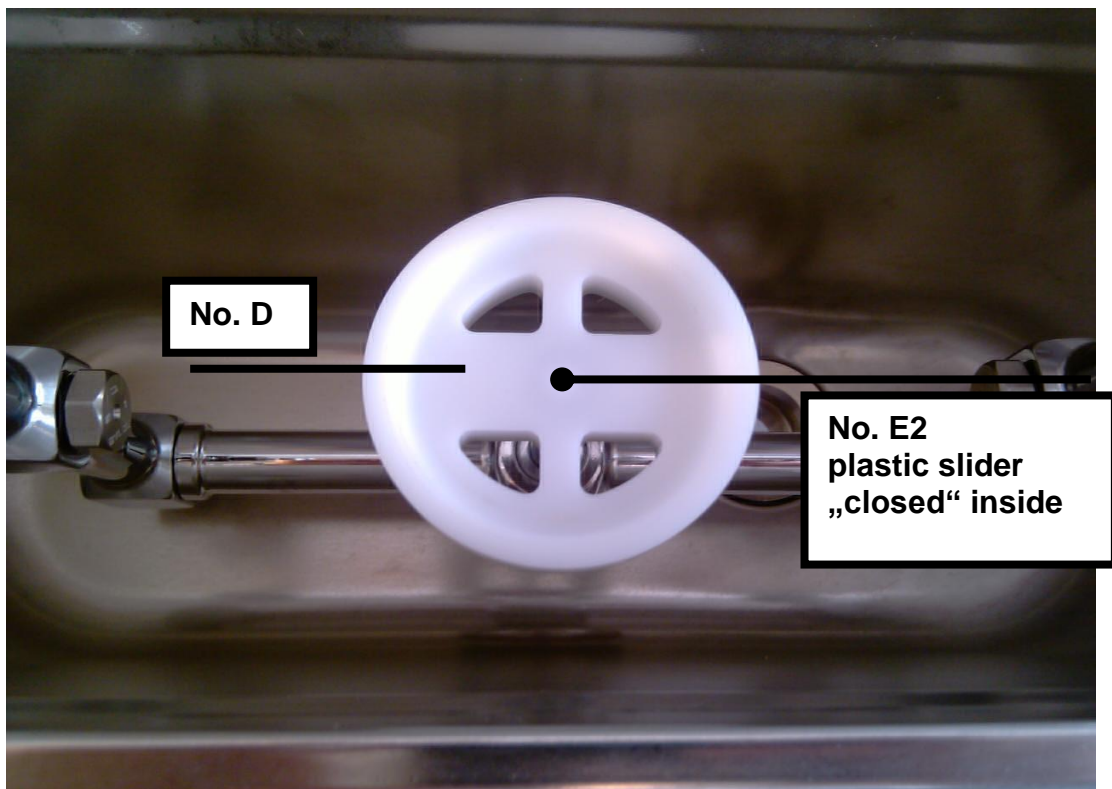
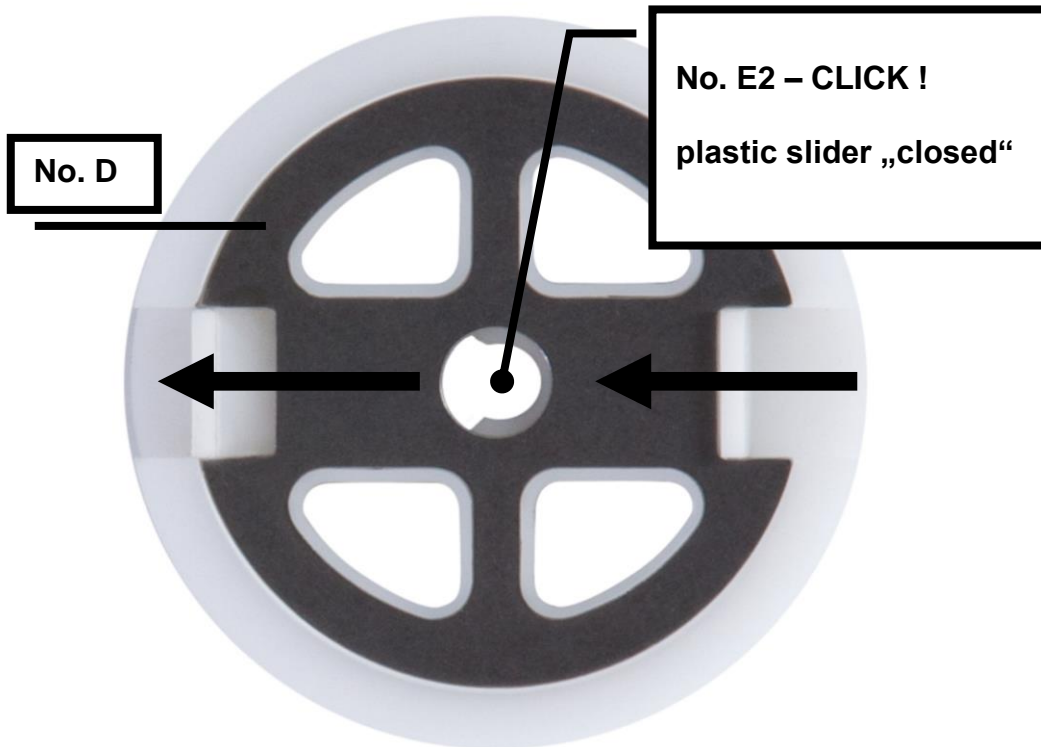


# LÖLSBERG

## Fitting Instructions – STEP 5

### STEP 5.2 - Fasten Activation Disc With Slider (No. D) onto the Valve Rod With Groove (No. X)

Fasten the Activation Disc With Slider (No. D) onto the Valve Rod With Groove (No. X) by bringing the slider into the “closed” position (No. E2) – **you should hear or feel the slider clicking!**



# LÖLSBERG

## Fitting Instructions – STEP 6

### STEP 6 – Connection of Water Supply Line

The i.SpatulaShower spray rinsing devices



930001  
930002  
930003



are to be installed with adequate backflow protection to comply with applicable federal, state, and local codes!

Ensure that all joints and seams in the splash zone are sealed after installation!

Ensure that brass parts are not exposed after installation!

Install a water pressure reducer (recommended water pressure +/- 2 bars resp. +/- 29 psi) and a ball tap!

Connect the pressure reducer to your water supply line/hose applying adequate sealing compounds/materials.

Optional (for steps 6+7):

i.SpatulaShower should be operated at water pressures between 1,5 and 2,5 bar.

For this purpose we offer e.g. installation-kit 930 976 consisting of

pressure reducer/manometer, ball tap, hose for the water inlet side as well as

dirt trap with strainer, threaded fitting and hose fitting for the water drain side!



# LÖLSBERG

## Fitting Instructions – STEP 7 + 8 + 9

### STEP 7 – Connection of Water Drain Line

Connect the 1" water drain connector (No. B2) fitted into the deep drawn hole of the rinsing container/pan (No. B1) in STEP 2 to your water drain line/hose applying adequate sealing compounds/materials.



### STEP 8 – Put Splash Cover (No. F)

Put the splash cover (No. F) over the spray rinsing unit into the rinsing container (No. B1).



### STEP 9 – Use System

Press the ice-cream scoop/spatula onto the white activation disc. The ice-cream scoop/spatula is always rinsed with fresh water from the sides. Dirty washing water runs away immediately. On removing the ice-cream scoop/spatula from the activation disc the water valves are automatically closed again by the water pressure. Store the rinsed scoops/spatulas in the deposits of the splash cover.



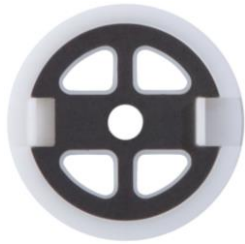
# LÖLSBERG

## Single components and spare parts

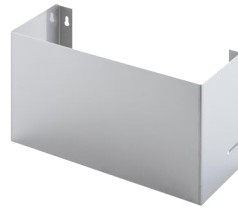
930932PS



930980PS



930903



930909P



920802



920812



920803



920813



930966



920212



930957



930958



930001



930981



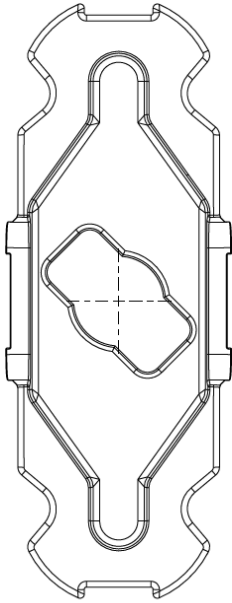
930976



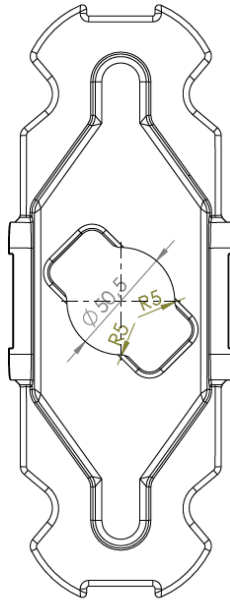
# LÖLSBERG

## Single components and spare parts

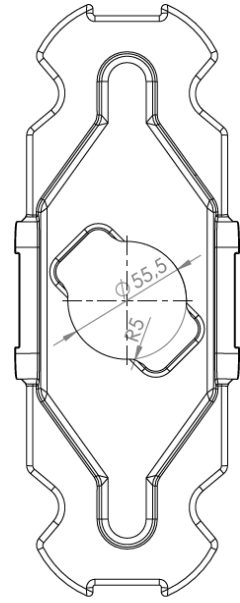
Splash covers with different openings (dimensions in mm – 1 inch = 25,4 mm)



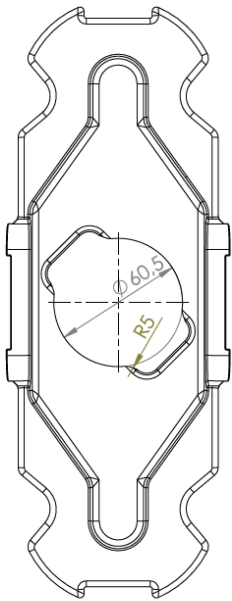
930909P  
(standard)



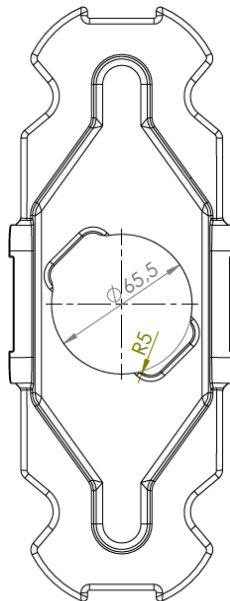
930909P50



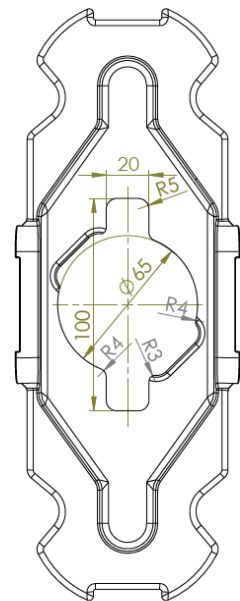
930909P55



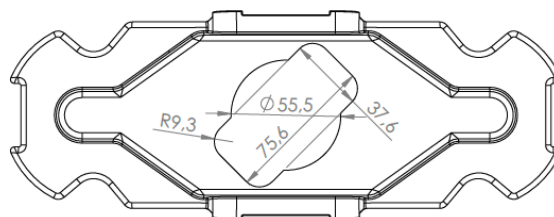
930909P60



930909P65



930909PL



930909PBR